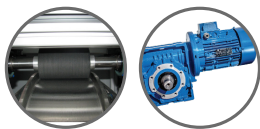


LAKI | MACHINE FOR ELECTRONIC COMPONENT PASSIVATION



CONSTRUCTION
Aluminium profiles

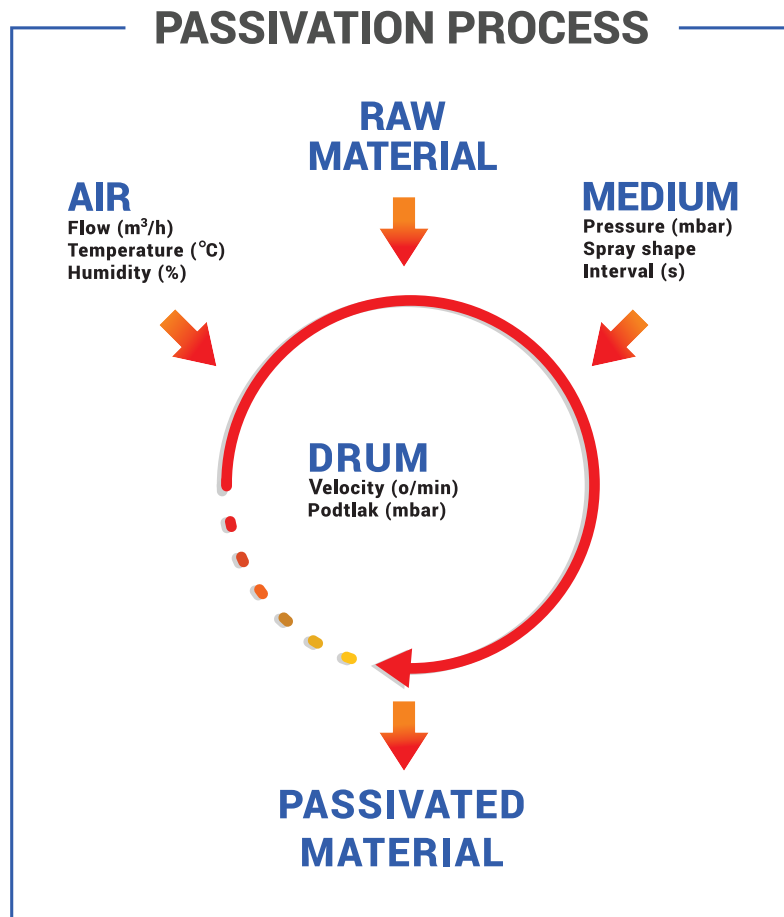


ELECTRICAL DRIVE
Electrical motor with reduction
Friction transmission



CONTROL
Siemens PLC S7/1200
Simatic KTP 600

PASSIVATION PROCESS



PASSIVATION

Lowering surface reactivity for anticorrosion protection by applying passive, nonreactive, layer.

WORKING PRINCIPLE

On specified time intervals medium is being sprayed on material that is being mixed in drum.

Process is conducted in controlled prepared atmosphere (temperature, flow, humidity).

INDUSTRIAL AUTOMATION / CUSTOM MADE MACHINES

Enso

+385 (43) 445 - 189

• ISO 9001

www.enso.hr • enso@enso.hr

MACHINE PARTS:

Massive stai. less steel drum:

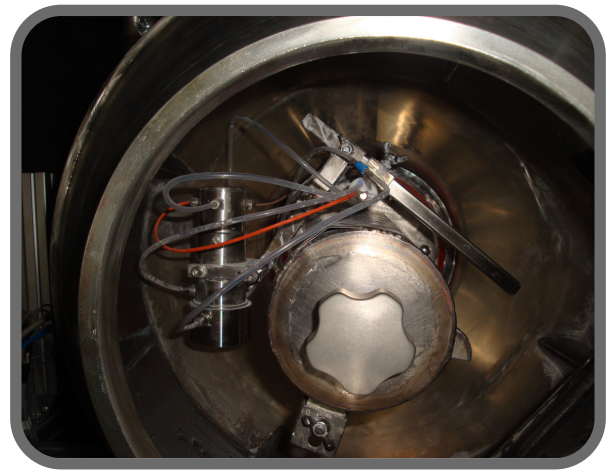
Electrical drive with friction transmission
Impediments for material mixing
Output channel for material pouring
Cooling

System for medium i. put a. d distributio. :

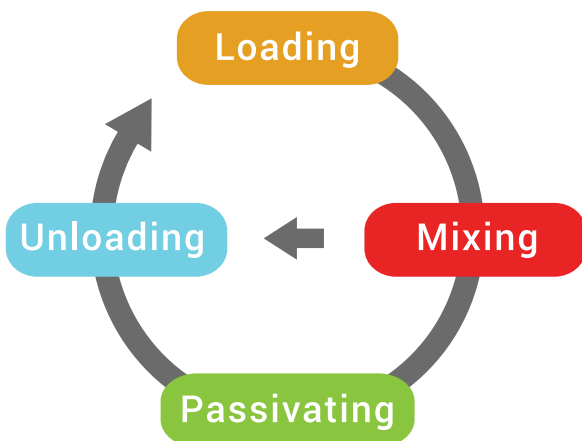
Scale for material and medium dosage
Peristaltic pump for medium input
Pneumatic nozzle
Adaptable nozzle carrier

System for air i. put a. d output:

Conduits
Output and input fan
Air warmer
Flow meter
Temperature meter
Humidity meter
Directional nozzle
Filter unit



PROCESS



Machine loading:

Material is loaded from holder to drum

Mixing:

Drum spins with given speed. Air with specified temperature is blown into drum with specified flow.

Passivating:

Nozzle sprays medium on material with specified pressure and time intervals.

Machine unloading:

Output funnel with container is placed in front of drum. Drum spins in opposite direction and material passes through output channel to output funnel.

INDUSTRIAL AUTOMATION / CUSTOM MADE MACHINES

Enso

+385 (43) 445 - 189

• ISO 9001

www.enso.hr • enso@enso.hr