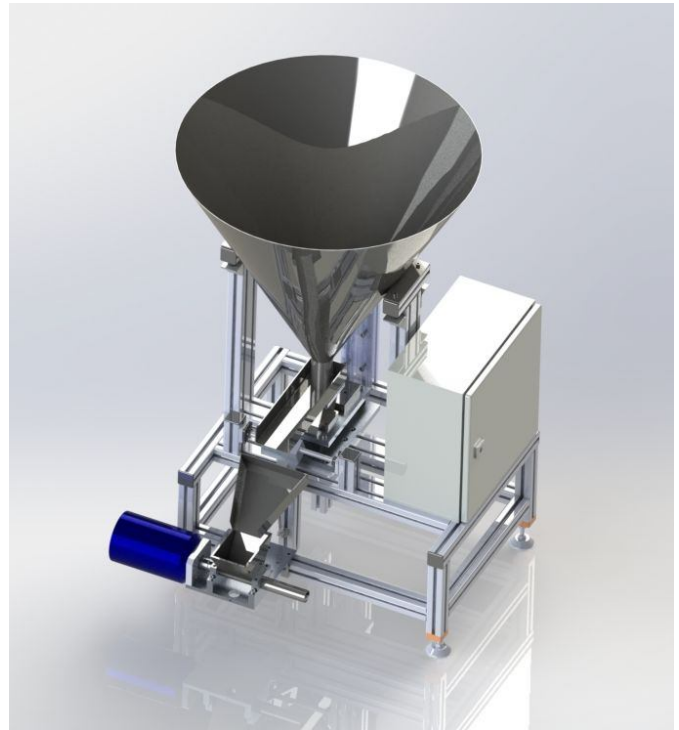


# DOZA-L

---

## Stroj za pakiranje rasutog materijala



### PROCES RADA

- Nasipavanje rasutog materijala (do 75 litara)
- Transport i raspodjela po vibrirajućoj taci
- Doziranje na željenu masu
- Isipavanje u lijevak
- Punjenje u vrećice

### NAMJENA

- Doziranje rasutih materijala kao što su lavanda, lan, kamilica i sl., te punjenje u adekvatnu ambalažu

### PREDNOSTI

- Ponovljivost količine doziranja
- Ciklus punjenja  $\leq 10$  sekundi

---

INDUSTRIJSKA AUTOMATIZACIJA / PROIZVODNJA SPECIJALNIH STROJEVA

**Enso**

+385 (43) 445 - 189

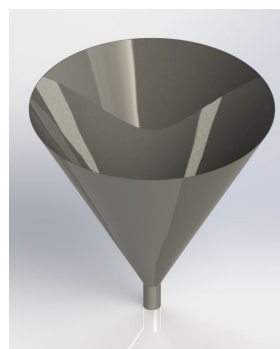
[www.enso.hr](http://www.enso.hr)

• ISO 9001

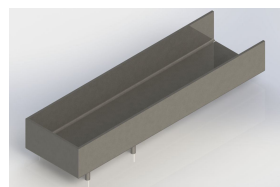
• [enso@enso.hr](mailto:enso@enso.hr)

Predmet doziranja: **LAVANDA**Gustoća medija: 100 kg/m<sup>3</sup> → 200 ml = 20 g

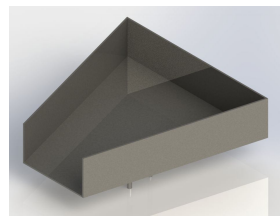
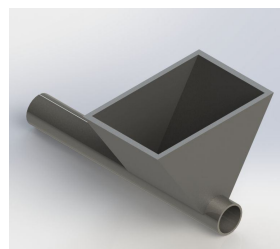
Lijevak:

Kapacitet:  
75 litaraTransportna  
taca:

2 brzine

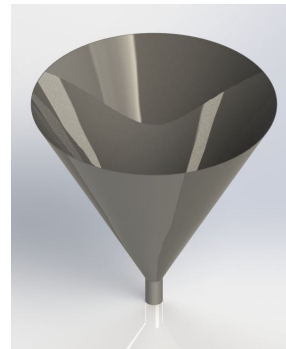


Dozirna taca:

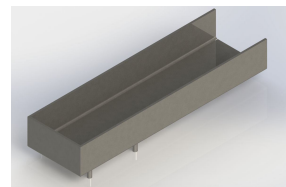
Kapacitet:  
20 gramaIzlazni lijevak s  
pužnim vijkom:Vrijeme  
pražnjenja:  
6 sekundi

Predmet doziranja: **LAN**Gustoća medija: 1000 kg/m<sup>3</sup> → 200 ml = 200 g

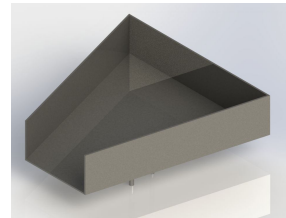
Lijevak:

Kapacitet:  
75 litaraTransportna  
taca:

2 brzine



Dozirna taca:

Kapacitet:  
200 gramaIzlazni  
cilindrični  
lijevak:Vrijeme  
pražnjenja:  
3 sekunde